



33A Church Street, Tetbury, GL8 8JG

£890 pcm

An attractive one bedroom flat in the heart of Tetbury with lovely views and an allocated parking space.

The Property

DESCRIPTION This attractive first floor maisonette is situated above the Tourist Center in the heart of Tetbury and was recently refurbished to a good standard. Perfect for a single person or couple, the property has a lovely open plan living room/kitchen, one double bedroom with ample wardrobes and a modern bathroom. The flat also comes with an allocated parking space for a small/medium size vehicle. Available end of November 2024.

SITUATION Tetbury is a thriving and historic market town situated within an Area of Outstanding Natural Beauty surrounded by delightful Cotswold Countryside. The town centre offers a broad range of shops and amenities for everyday needs as well as a number of quality antique shops, excellent hotels, restaurants and cafes. Further everyday needs include a large supermarket, hospital, surgeries and post office whilst there are also excellent schools catering for all ages.

Conveniently located less than half an hour from both the M4 and M5 motorway, Tetbury is within easy reach of Cirencester, Cheltenham, Bath, Bristol and Swindon. Close by is the beautiful Forestry Commission run Westonbirt Arboretum, as well as Westonbirt Prep and all girls boarding school, and Prince Charles Highgrove

Estate. There is good access to nearby Kemble Railway Station which provides regular fast services to London and other regional centres.

Directions

<https://w3w.co/shelving.written.shocking>

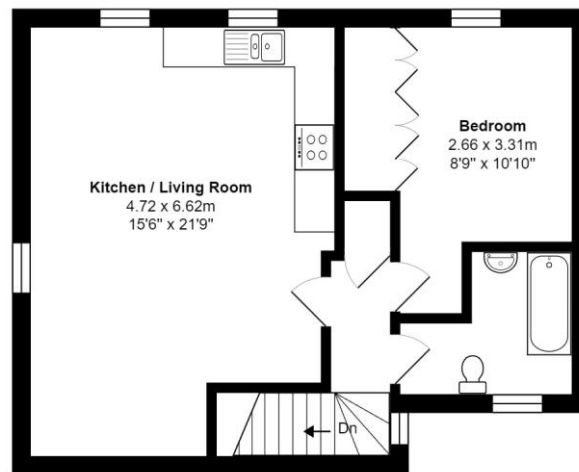
Local Authority

Cotswold District Council

Council Tax

B £1,688

Score	Energy rating	Current	Potential
92+	A		
81-91	B		
69-80	C		73 C
55-68	D	65 D	
39-54	E		
21-38	F		
1-20	G		



First Floor

Total Area: 53.0 m² ... 570 ft²

All measurements are approximate and for display purposes only